

Hans-Peter Blaser

BAND- COACHING

Band 1

Einspielen, Warm-Ups, Klangschulung

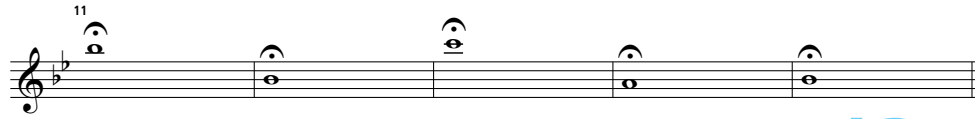
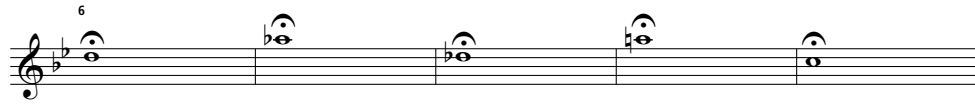
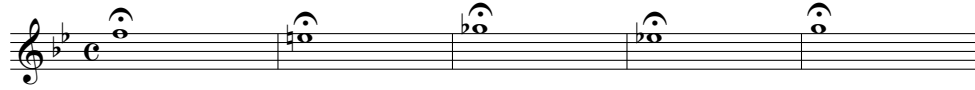


Inhaltsverzeichnis

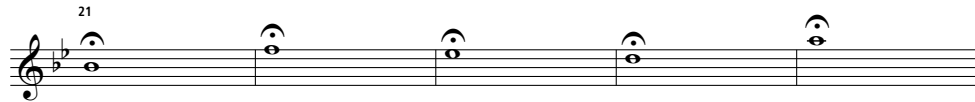
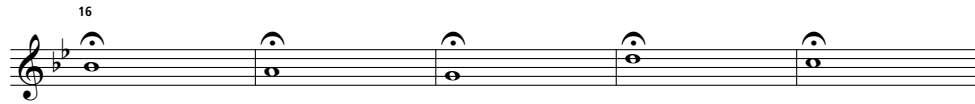
| | |
|---|----|
| Kapitel 1: Töne aushalten | |
| ta 1 | 4 |
| ta 2 | 4 |
| ta 3 | 4 |
| ta 4 | 5 |
| ta 5 | 5 |
| ta 6 | 5 |
| Kapitel 2: Lip Flexibility | |
| lf 1 | 6 |
| lf 2 | 6 |
| lf 3 | 7 |
| lf 4 | 7 |
| lf 5 | 8 |
| lf 6 | 8 |
| Kapitel 3: Zweistimmige Einspielübungen | |
| duett 1 | 9 |
| duett 2 | 9 |
| duett 3 | 10 |
| duett 4 | 10 |
| duett 5 | 11 |
| duett 6 | 11 |
| duett 7 | 12 |
| duett 8 | 12 |
| Kapitel 4: Tonleitern | 13 |
| Kapitel 5: Ein- und Mehrstimmige Tonleiterübungen | |
| tl art 1 | 16 |
| tl art 2 | 17 |
| tl art 3 | 18 |
| tl art 4 | 19 |
| Kapitel 6: Klangschulung | |
| Kanon: Bona Nox von W.A. Mozart | 19 |
| Kanon: Vom Aufgang der Sonne | 20 |
| Choral: Ave Stella Maris von E. Grieg | 20 |
| Choral: To God be the Glory von W. H. Doane | 21 |
| Tonleitertabelle | 22 |
| Chromatische Tonleiter | 22 |
| Dur Tonleitern | 22 |
| Moll Tonleitern | 23 |
| Harmonisch Moll | 25 |
| Melodisch Moll | 25 |

Kapitel 1: Töne aushalten

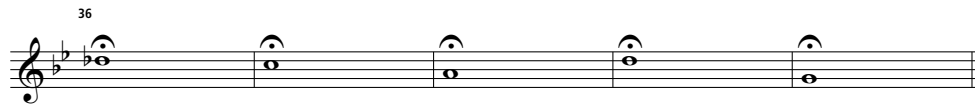
ta 1



ta 2



ta 3

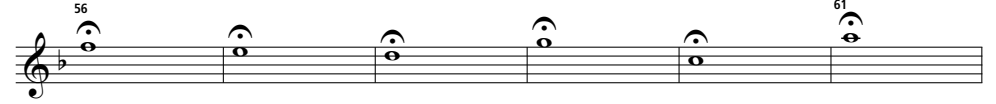


ta 4



1./2. Flöte

ta 5



ta 6



Kapitel 2: Lip Flexibility

If 1

Musical notation for exercise If 1, measures 81-101. The exercise is written in treble clef with a key signature of one sharp (F#). It consists of four staves of music. The first staff starts at measure 81 and ends at 85. The second staff starts at 86 and ends at 90. The third staff starts at 91 and ends at 95. The fourth staff starts at 96 and ends at 101. The music features eighth and sixteenth notes, often beamed together, with various articulations and slurs.

If 2

Musical notation for exercise If 2, measures 106-116. The exercise is written in treble clef with a key signature of two flats (Bb, Eb). It consists of three staves of music. The first staff starts at measure 106 and ends at 110. The second staff starts at 111 and ends at 115. The third staff starts at 116 and ends at 120. The music features long, sweeping lines with slurs and ties, primarily using quarter and eighth notes.

If 3

Musical notation for exercise If 3, measures 121-121. The exercise is written in treble clef with a key signature of two flats (Bb, Eb). It consists of one staff of music starting at measure 121 and ending at 121. The music features a sequence of eighth and sixteenth notes with slurs.

Musical notation for exercise If 4, measures 126-131. The exercise is written in treble clef with a key signature of two flats (Bb, Eb). It consists of two staves of music. The first staff starts at measure 126 and ends at 130. The second staff starts at 131 and ends at 135. The music features a sequence of eighth and sixteenth notes with slurs.

If 4

Musical notation for exercise If 4, measures 136-156. The exercise is written in treble clef with a key signature of two flats (Bb, Eb). It consists of four staves of music. The first staff starts at measure 136 and ends at 140. The second staff starts at 141 and ends at 145. The third staff starts at 146 and ends at 150. The fourth staff starts at 151 and ends at 155. The music features a sequence of eighth and sixteenth notes with slurs.

1. Klarinette

If 5

Musical score for 'If 5' (part 1) in treble clef, key of D major. It consists of four staves of music. The first staff starts at measure 161. The second staff starts at measure 166. The third staff starts at measure 176. The fourth staff starts at measure 181. The piece concludes with a double bar line and a sharp sign at the end of the fourth staff.

If 6

Musical score for 'If 6' (part 1) in treble clef, key of D major. It consists of three staves of music. The first staff starts at measure 186. The second staff starts at measure 191. The third staff starts at measure 196. The piece concludes with a double bar line and a sharp sign at the end of the third staff.

Kapitel 3: Zweistimmige Einspielübungen

duett 1

Musical score for 'duett 1' (part 1) in treble clef, key of D major. It consists of four staves of music. The first staff starts at measure 201. The second staff starts at measure 206. The third staff starts at measure 211. The fourth staff starts at measure 216. The piece concludes with a double bar line and a sharp sign at the end of the fourth staff.

duett 2

Musical score for 'duett 2' (part 1) in treble clef, key of D major. It consists of four staves of music. The first staff starts at measure 221. The second staff starts at measure 226. The third staff starts at measure 236. The fourth staff starts at measure 241. The piece concludes with a double bar line and a sharp sign at the end of the fourth staff.

1./2. Alt-Saxophon

Kapitel 3: Zweistimmige Einspielübungen

duett 1

201
206
211
216

duett 2

221
226
231
236
241

duett 3

246
251
256
261

duett 4

266
271
276
281

1. Trompete

duett 5

Musical score for duett 5, 1./3. Horn in F, measures 286-306. The score consists of five staves of music in treble clef, 3/4 time signature. Measure numbers 286, 291, 296, 301, and 306 are indicated above the staves. The music features a mix of eighth and quarter notes, with some slurs and ties.

duett 6

Musical score for duett 6, 1./3. Horn in F, measures 311-326. The score consists of three staves of music in treble clef, 3/4 time signature. Measure numbers 311, 316, 321, and 326 are indicated above the staves. The music features a mix of eighth and quarter notes, with some slurs and ties.

duett 7

Musical score for duett 7, 1./3. Horn in F, measures 331-351. The score consists of three staves of music in treble clef, 3/4 time signature. Measure numbers 331, 336, 341, 346, and 351 are indicated above the staves. The music features a mix of eighth and quarter notes, with some slurs and ties.

duett 8

Musical score for duett 8, 1./3. Horn in F, measures 356-366. The score consists of three staves of music in treble clef, 3/4 time signature. Measure numbers 356, 361, and 366 are indicated above the staves. The music features a mix of eighth and quarter notes, with some slurs and ties.

1./3. Horn in F

Kapitel 4: Tonleitern

tl 1 371

tl 2 376 tl 3

tl 4 381 tl 5

tl 6 386 tl 7

tl 8 391 tl 9

tl 10 396 tl 11

tl 12 401 tl 12a

tl 12b 406 tl 12c tl 12d tl 12e tl 12f

tl 12g 411 tl 12h tl 12i

tl 12k tl 12l tl 13 416

tl 14 426

tl 15 431 tl 16

tl 17 441

tl 17a 446 tl 17b tl 17c

tl 17d 451 tl 17e tl 17f tl 17g

tl 17h 456 tl 17i tl 17k

tl 17l tl 17m tl 17n

tl 18

461

466 tl 18a tl 18b tl 18c

tl 18d tl 19

471 472

2

476

481 tl 20

486

491

Kapitel 5: Ein- und mehrstimmige Tonleiterübungen

tl art 1

496

501

506

511

516

tl art 2

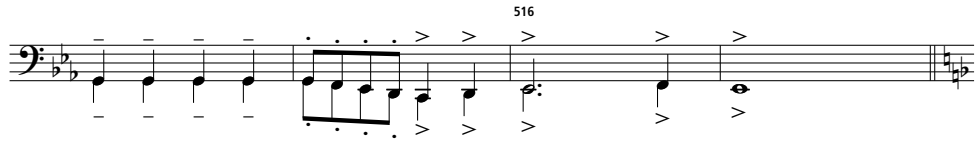
521

526

531

1./2. Posaune in C

516



tl art 2

521



526



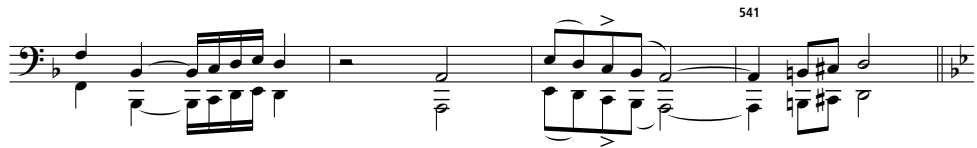
531



536



541



Bässe in C

tl art 3

546



551



556



561



566



571



576



581



tl 18a tl 18b tl 18c tl 18d tl 19

tl 18a-18d: gleiche Tonfolgen spielen wie bei tl 18

471

476

481

tl 20

486 487 2 491

Kapitel 5: Ein- und mehrstimmige Tonleiterübungen

tl art 1

496

501

506

511

516

tl art 2

518

24

tl art 3

542

41

tl art 4

585

2

588

2

591

2

594

5

Pauken

Kapitel 5: Ein- und mehrstimmige Tonleiterübungen

tl art 1

Exercise 496: Treble clef, key signature of two flats, starting with a double bar line and a '2' above the first measure. The melody consists of eighth and quarter notes.

Exercise 501: Treble clef, key signature of two flats, starting with a double bar line. The melody consists of quarter and eighth notes.

Exercise 506: Treble clef, key signature of two flats, starting with a double bar line. The melody consists of quarter and eighth notes.

Exercise 511: Treble clef, key signature of two flats, starting with a double bar line. The melody consists of quarter and eighth notes.

Exercise 516: Treble clef, key signature of two flats, starting with a double bar line. The melody consists of quarter and eighth notes, ending with a double bar line and a key signature change to one flat.

tl art 2

Exercise 521: Treble clef, key signature of two flats, starting with a double bar line. The melody consists of quarter and eighth notes.

Exercise 526: Treble clef, key signature of two flats, starting with a double bar line. The melody consists of quarter and eighth notes.

Exercise 531: Treble clef, key signature of two flats, starting with a double bar line. The melody consists of quarter and eighth notes.

Exercise 536: Treble clef, key signature of two flats, starting with a double bar line. The melody consists of quarter and eighth notes.

Exercise 541: Treble clef, key signature of two flats, starting with a double bar line. The melody consists of quarter and eighth notes, ending with a double bar line and a key signature change to one flat.

tl art 3

Exercise 546: Treble clef, key signature of two flats, starting with a double bar line. The melody consists of quarter and eighth notes.

Exercise 551: Treble clef, key signature of two flats, starting with a double bar line. The melody consists of quarter and eighth notes.

Exercise 556: Treble clef, key signature of two flats, starting with a double bar line. The melody consists of quarter and eighth notes.

Exercise 561: Treble clef, key signature of two flats, starting with a double bar line. The melody consists of quarter and eighth notes.

Exercise 566: Treble clef, key signature of two flats, starting with a double bar line. The melody consists of quarter and eighth notes.

Exercise 571: Treble clef, key signature of two flats, starting with a double bar line. The melody consists of quarter and eighth notes.

Exercise 576: Treble clef, key signature of two flats, starting with a double bar line. The melody consists of quarter and eighth notes, ending with a double bar line and a key signature change to one flat.

Exercise 581: Treble clef, key signature of two flats, starting with a double bar line. The melody consists of quarter and eighth notes, ending with a double bar line and a key signature change to one flat.

Mallets

Rhythmus Pattern

1 *S.D.*
B.D.
suspended Cymbel

11 **12**

3 **4**

13 **14**

5 **6**

15 **16**

7 **8**

17 **18**

9 **10**

19 **20**

Percussion

Kanon: Vom Aufgang der Sonne

Musical score for 'Kanon: Vom Aufgang der Sonne' for 1./2. Oboe. The score consists of two staves. The first staff contains measures 1, 2, 3, and 4, with measure numbers 1, 2, 621, and 3 respectively. The second staff contains measures 4 and 5, with measure numbers 4 and 621 respectively. The key signature is one flat (B-flat), and the time signature is 4/4.

Ave Stella Maris von Edvard Grieg

Musical score for 'Ave Stella Maris von Edvard Grieg' for 1./2. Oboe. The score consists of five staves. The first staff contains measures 626 to 631, with dynamics *p* and *mf* *cresc.*. The second staff contains measures 634 to 636, with dynamics *f* and *pp dolce*. The third staff contains measures 641 to 646, with dynamics *cresc. molto*, *f*, *dim*, and *p*. The fourth staff contains measures 646 to 651, with dynamics *p*. The fifth staff contains measures 651 to 655, with dynamics *mf* *cresc.*, *f*, and *pp dolce*. The key signature is one flat (B-flat), and the time signature is 4/4.

1./2. Oboe

Musical score for 'Kanon: Vom Aufgang der Sonne' (continued) for 1./2. Oboe. The first staff contains measures 661 to 666, with dynamics *cresc. molto*, *f*, and *dim*. The second staff contains measures 666 to 671, with dynamics *p* and *pp*. The key signature is one flat (B-flat), and the time signature is 4/4.

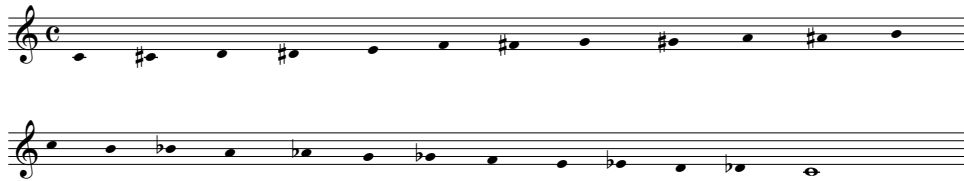
To God be the Glory von William H. Doane

Musical score for 'To God be the Glory von William H. Doane' for 1./2. Oboe. The score consists of six staves. The first staff contains measures 671 to 676, with dynamics *mf*. The second staff contains measures 676 to 681. The third staff contains measures 681 to 686, with dynamics *f*. The fourth staff contains measures 686 to 691. The fifth staff contains measures 691 to 696. The sixth staff contains measures 696 to 701. The key signature is one flat (B-flat), and the time signature is 4/4.

Tonleitertabelle

Die folgende Tabelle vermittelt einen Überblick über die chromatische und sämtliche Dur- und Moll-Tonarten.

Chromatische Tonleiter



Dur Tonarten



Instrumente in B

G-Dur



D-Dur



A-Dur



E-Dur



H-Dur



Fis-Dur



Cis-Dur



Moll-Tonarten

In der folgenden Übersicht finden Sie die reinen Molltonleitern. Ein Hinweis zu harmonisch und melodisch Moll folgt am Ende der Tabelle.

A-Moll



D-Moll



G-Moll



C-Moll

